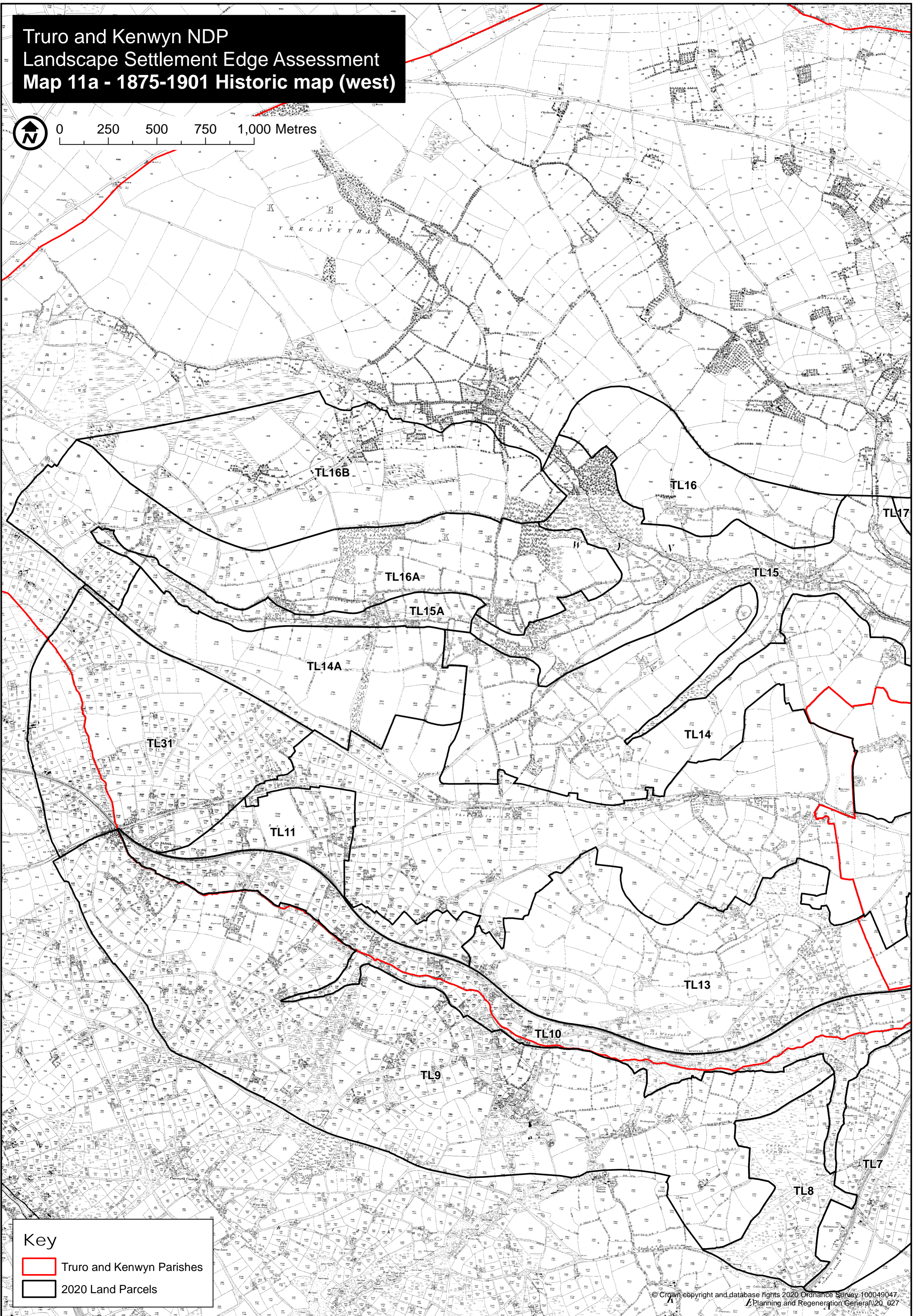
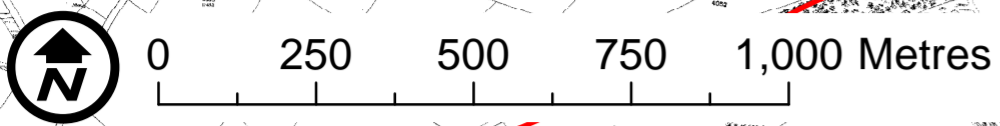

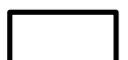


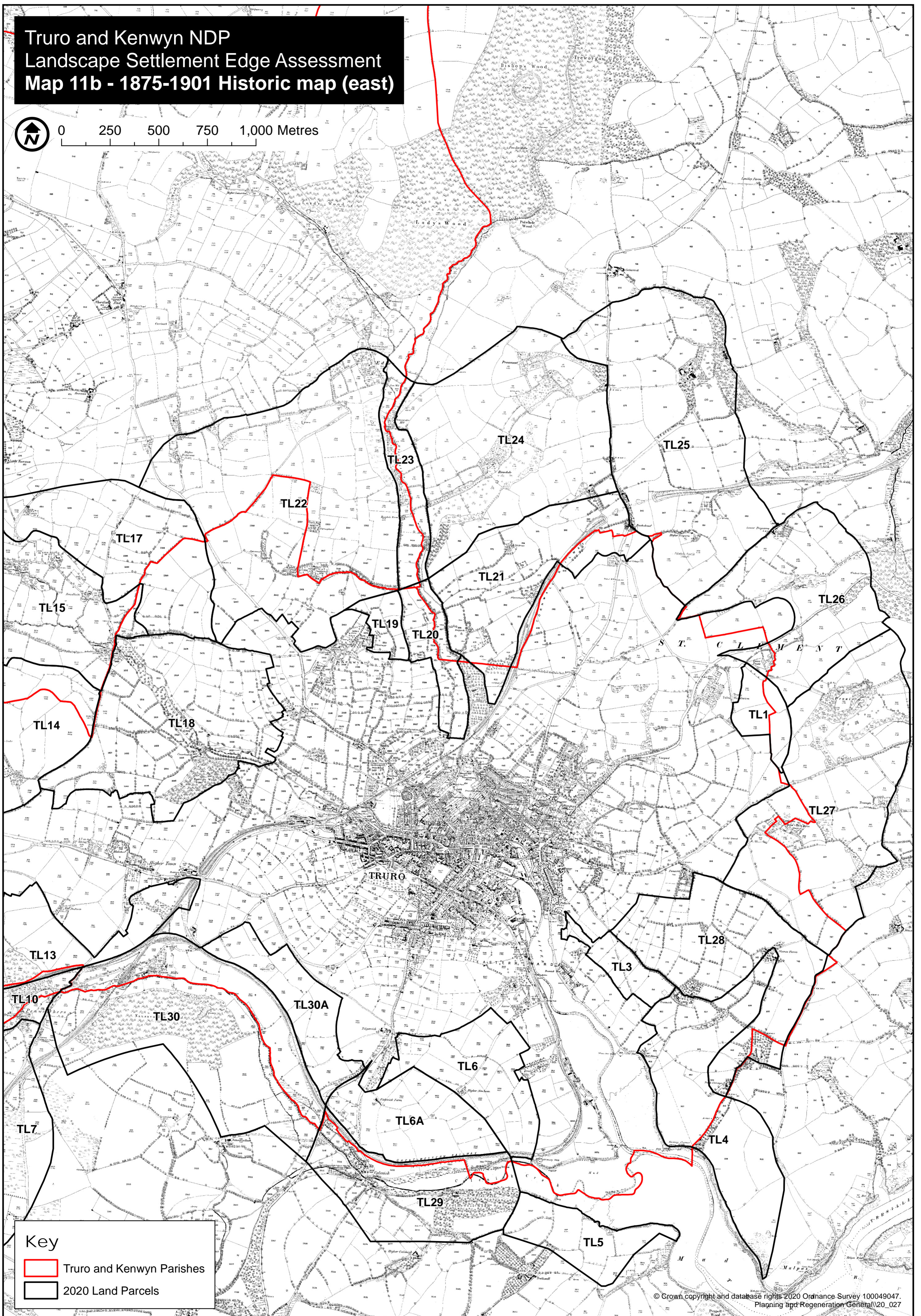
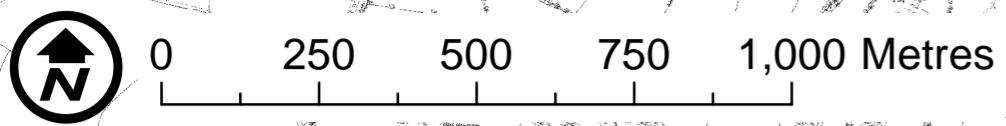
Truro and Kenwyn NDP  
Landscape Settlement Edge Assessment  
Map 11a - 1875-1901 Historic map (west)





Key

-  Truro and Kenwyn Parishes
-  2020 Land Parcels

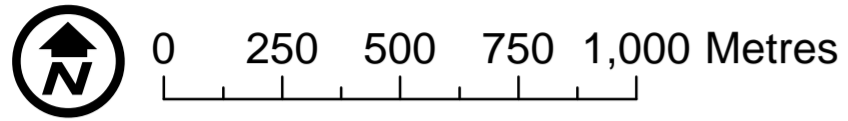
# Truro and Kenwyn NDP Landscape Settlement Edge Assessment Map 11b - 1875-1901 Historic map (east)









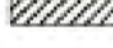


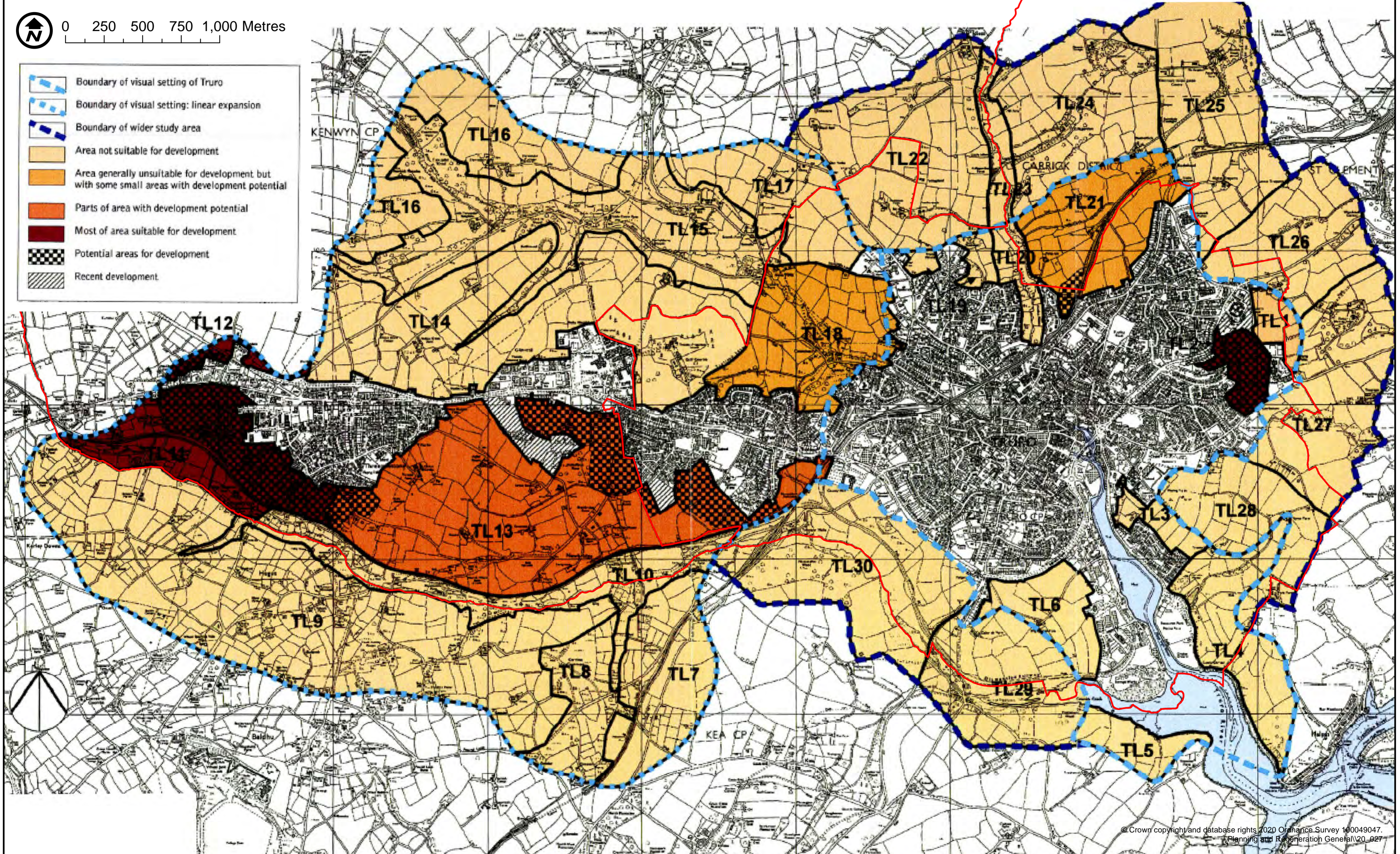
## Key

-  Truro and Kenwyn Parishes
-  2020 Land Parcels

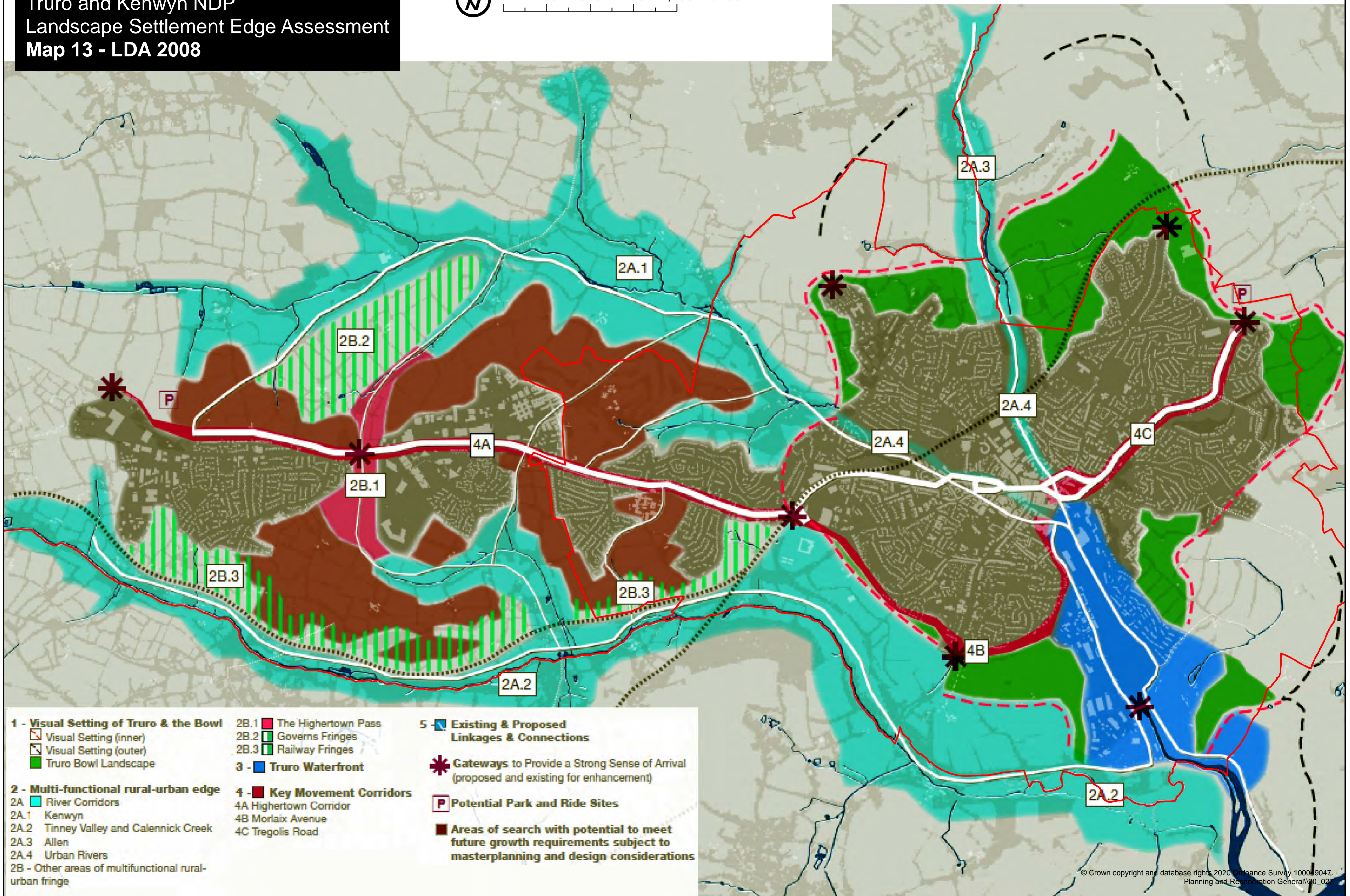
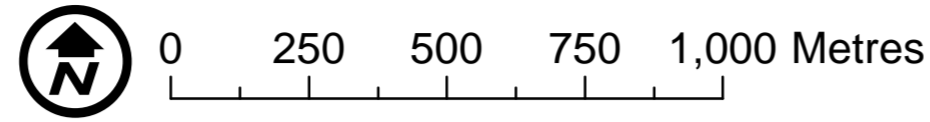
Truro and Kenwyn NDP  
 Landscape Settlement Edge Assessment  
 Map 12 - 2000 LDA



-  Boundary of visual setting of Truro
-  Boundary of visual setting: linear expansion
-  Boundary of wider study area
-  Area not suitable for development
-  Area generally unsuitable for development but with some small areas with development potential
-  Parts of area with development potential
-  Most of area suitable for development
-  Potential areas for development
-  Recent development



Truro and Kenwyn NDP  
Landscape Settlement Edge Assessment  
Map 13 - LDA 2008



**1 - Visual Setting of Truro & the Bowl**

- Visual Setting (inner)
- Visual Setting (outer)
- Truro Bowl Landscape

**2 - Multi-functional rural-urban edge**

- 2A - River Corridors**
- 2A.1 Kenwyn
- 2A.2 Tinney Valley and Calennick Creek
- 2A.3 Allen
- 2A.4 Urban Rivers
- 2B - Other areas of multifunctional rural-urban fringe

**2B.1 - The Hightown Pass**

- Gowers Fringes
- Railway Fringes

**3 - Truro Waterfront**

**4 - Key Movement Corridors**

- 4A Hightown Corridor
- 4B Morlaix Avenue
- 4C Tregolis Road

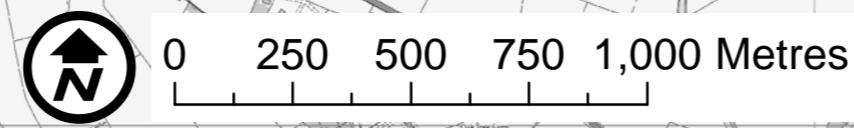
**5 - Existing & Proposed Linkages & Connections**

- Gateways to Provide a Strong Sense of Arrival (proposed and existing for enhancement)

**P Potential Park and Ride Sites**

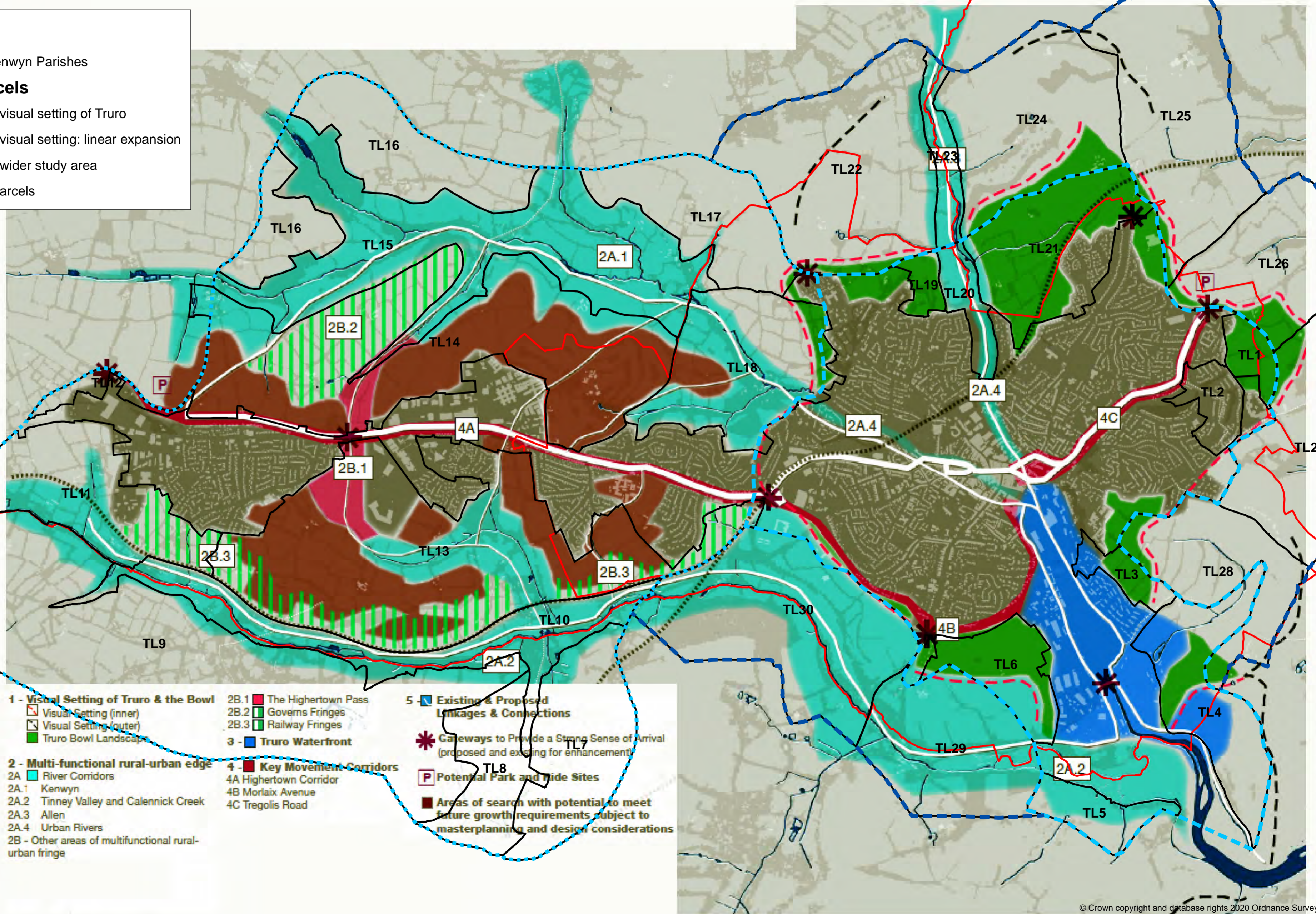
- Areas of search with potential to meet future growth requirements subject to masterplanning and design considerations

# Truro and Kenwyn NDP Landscape Settlement Edge Assessment Map 14 - 2000 and 2008 overlaid



## Key

- Truro and Kenwyn Parishes
- 2000 Land Parcels**
- Boundary of visual setting of Truro
- Boundary of visual setting: linear expansion
- Boundary of wider study area
- 2000 Land Parcels



- |   |  |   |
|---|--|---|
| <p><b>1 - Visual Setting of Truro &amp; the Bowl</b></p> <ul style="list-style-type: none"> <li><span style="border: 1px solid red; width: 10px; height: 10px; display: inline-block; margin-right: 5px;"></span> Visual Setting (inner)</li> <li><span style="border: 1px dashed blue; width: 10px; height: 10px; display: inline-block; margin-right: 5px;"></span> Visual Setting (outer)</li> <li><span style="background-color: green; width: 10px; height: 10px; display: inline-block; margin-right: 5px;"></span> Truro Bowl Landscapes</li> </ul> <p><b>2 - Multi-functional rural-urban edge</b></p> <ul style="list-style-type: none"> <li><span style="background-color: cyan; width: 10px; height: 10px; display: inline-block; margin-right: 5px;"></span> 2A River Corridors</li> <li><span style="background-color: cyan; width: 10px; height: 10px; display: inline-block; margin-right: 5px;"></span> 2A.1 Kenwyn</li> <li><span style="background-color: cyan; width: 10px; height: 10px; display: inline-block; margin-right: 5px;"></span> 2A.2 Tinney Valley and Calennick Creek</li> <li><span style="background-color: cyan; width: 10px; height: 10px; display: inline-block; margin-right: 5px;"></span> 2A.3 Allen</li> <li><span style="background-color: cyan; width: 10px; height: 10px; display: inline-block; margin-right: 5px;"></span> 2A.4 Urban Rivers</li> <li><span style="background-color: cyan; width: 10px; height: 10px; display: inline-block; margin-right: 5px;"></span> 2B - Other areas of multifunctional rural-urban fringe</li> </ul> | <ul style="list-style-type: none"> <li><span style="background-color: red; width: 10px; height: 10px; display: inline-block; margin-right: 5px;"></span> 2B.1 The Hightown Pass</li> <li><span style="background-color: green; width: 10px; height: 10px; display: inline-block; margin-right: 5px;"></span> 2B.2 Govers Fringes</li> <li><span style="background-color: green; width: 10px; height: 10px; display: inline-block; margin-right: 5px;"></span> 2B.3 Railway Fringes</li> </ul> <p><b>3 - Truro Waterfront</b></p> <ul style="list-style-type: none"> <li><span style="background-color: blue; width: 10px; height: 10px; display: inline-block; margin-right: 5px;"></span> 4 Key Movement Corridors</li> <li><span style="background-color: blue; width: 10px; height: 10px; display: inline-block; margin-right: 5px;"></span> 4A Hightown Corridor</li> <li><span style="background-color: blue; width: 10px; height: 10px; display: inline-block; margin-right: 5px;"></span> 4B Morlaix Avenue</li> <li><span style="background-color: blue; width: 10px; height: 10px; display: inline-block; margin-right: 5px;"></span> 4C Tregolis Road</li> </ul> | <p><b>5 - Existing &amp; Proposed Linkages &amp; Connections</b></p> <ul style="list-style-type: none"> <li><span style="color: red; font-size: 2em;">✱</span> Gateways to Provide a Strong Sense of Arrival (proposed and existing for enhancement)</li> <li><span style="border: 1px solid red; padding: 2px; font-size: 0.8em;">P</span> Potential Park and Hide Sites</li> <li><span style="background-color: brown; width: 10px; height: 10px; display: inline-block; margin-right: 5px;"></span> Areas of search with potential to meet future growth requirements subject to masterplanning and design considerations</li> </ul> |
|---|--|---|